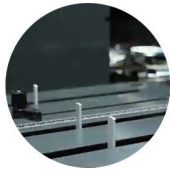




全自动压痕进封面胶装机

Full Automatic Creasing & Cover Binding Machine

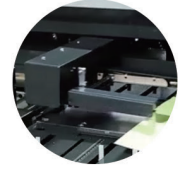
成冠 -F20/Chengguan-F20



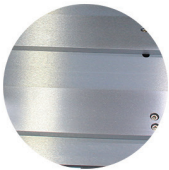
● 前后拍步进电机控制，系统一键调节
Front/Rear Stepper Motor Control One-touch CNC System for Cover Length Adjustment
 数控调节封面长度，双步进电机精准控制，一键操作，最小可支持 300mm 压痕进纸
 Minimum 300mm Creasing Feed Supported



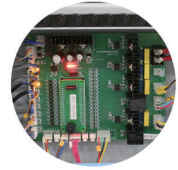
● 纯铝 (全新一体式大胶槽) 独立控温
Pure Aluminum (New Integrated Large Glue Tank) with Independent Temperature Control
 3 胶轮 + 侧胶轮，全铝胶槽解决上胶烦恼，装订成品满足各种厚度要求，独立控温，升温均匀速度快，无异味且能保持热熔胶的特性和颜色不变
 3 Glue Rollers + Side Glue Roller, All-Aluminum Glue Tank Ensures Trouble-Free Glue Application. Perfect Binding Results for Books of Various Thicknesses. Independent Temperature Control for Fast and Even Heating



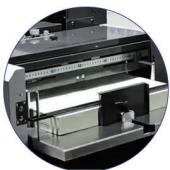
● 飞达自动进封面
Feeder Auto Cover Feeding System
 飞达全自动进封，稳定高效，解决人工低效率放纸，数控调节四道压痕，成书效果简洁美观
 Full-auto feeder ensures stable & high-efficiency cover feeding. Eliminates inefficient manual paper loading. NC-controlled quadruple creasing adjustment. Produces neat and aesthetically perfect book blocks. Door-Free Operation While Preserving Hot Melt Adhesive Properties and Color Integrity



● 自动升降平台，方圆任意调节
Auto-lifting Platform
 夹台根据书本厚度，自动调整升降高度，控制书本方圆，来适应书本所需要的效果无需要人工调整
 The clamping table automatically adjusts its height according to book thickness to achieve desired binding effect



● 全自动电路控制
Fully Automated Circuit Control
 采用原装进口电子元件，智能电路控制，自动检测，光电感应，电机检测故障显示
 Utilizes original imported electronic components with intelligent circuit control, featuring auto-detection, photoelectric sensing, and motor fault display.



● 100mm 封面放置台
100mm Cover Feeding Table
 封面堆放台厚度 100mm，摆放轻松，定位精准，吹吸气一体压痕稳定
 100mm-thick stacking platform enables effortless placement and precise positioning. Integrated air-blow/suction system ensures stable creasing



● 10.4 寸彩色触摸屏
10.4-inch Color Touchscreen
 10.4 寸彩色触摸屏显示，操作直观简单，使用方便快捷，各项参数自由设定，手动 / 自动模式自由切换，适应急件和大批量生产
 The 10.4-inch color touchscreen provides intuitive operation for fast and easy use. Freely adjustable parameters for customized settings. Seamless switching between manual and automatic modes. Ideal for both rush jobs and high volume production



● 双直线导轨小车行走，刹车电机定位准确
 小车高速行驶采用刹车电机，保证小车位置停止准确无误，工业级线性导轨，同步带传动结构
 High-Speed Carriage on Dual Guide Rails with Brake Motor Positioning — Guarantees Precise and Reliable Stopping Accuracy

产品型号：成冠 - F20
 Product No: Chengguan-F20

最大制本长度：440MM
 Max. Book Length: 440MM

铣刀方式：小铣刀 + 太阳铣刀
 Cutting Mechanism: Small Sharp Blade + Disc Milling Cutter

最大制本厚度：60MM
 MAX. binding thickness: 60MM

熔胶时间：<30 分钟
 Melting Time: <30Min

铣折页：三折页
 Folding Style: 3-Fold

装订速度：500 本 / 小时
 Binding Speed: 500 books/hour

三胶轮 + 侧胶
 Gluing System: Triple Glue Wheel + Side Glue

电压及功率：220V/3500W
 Voltage/Power: 220V/3500W

胶装方式：手自一体
 Binding Method: Manual & Automatic

最大封面宽度：660*425MM
 Maximum Cover Size: 660*425mm

封面堆放高度：100MM
 Maximum Stacking Height: 100mm